



The Global Language of Business

Warehouse Outbound Instruction and Notification Business Message Standard (BMS)

Release 3.6, Ratified, Mar 2023



Document Summary

Document Item	Current Value
Document Name	Warehouse Outbound Instruction and Notification Business Message Standard (BMS)
Document Date	Mar 2023
Document Version	3.6
Document Issue	1
Document Status	Ratified

Work Request Reference

Date of WR Submission to GSMP:	WR Submitter(s):	Refer to Work Request (WR) Number(s):
09-Jul-2013	Philips N.V.	WR 13-000106
07-May-2014	GS1 Germany	WR 14-000074
25-Jun-2014	GS1 Global Office	WR 14-000110
03-Oct-2018	GS1 GO	18-000319

Business Requirements Document (BRAD) Reference

BRAD Title	BRAD Issue Date	BRAD Version
Warehousing Inbound and Outbound processes	25-Jul-2012	1.0

Document Change History

Date of Change	Version	Changed By	Reason for Change	Summary of Change
12-Jan-2012	BMS 3.0 – Issue 1	Mark Van Eeghem	BMS Release 3.0	See summary of changes
01-May-2013	BMS 3.1 – Issue 1	Coen Janssen	BMS Release 3.1	See summary of changes
15-Sep-2014	BMS 3.2 – Issue 1	Ewa Iwicka	BMS Release 3.2	See summary of changes
01-Mar-2017	BMS 3.3 – Issue 1	Ewa Iwicka	BMS Release 3.3	See summary of changes
15-Oct-2018	BMS 3.4 – Issue 1	Ewa Iwicka	BMS Release 3.4	See summary of changes
02-Feb-2021	BMS 3.5 – Issue 1	Miklos Bolyky	BMS Release 3.5	See summary of changes
05-Jan-2022	BMS 3.5.1 – Issue 1	Miklos Bolyky	BMS Release 3.5.1	See summary of changes
01-Mar-2023	BMS 3.6 – Issue 1	Miklos Bolyky	BMS Release 3.6	See summary of changes



Disclaimer

GS1®, under its IP Policy, seeks to avoid uncertainty regarding intellectual property claims by requiring the participants in the Work Group that developed this **Warehouse Outbound Instruction and Notification Business Message Standard (BMS)** to agree to grant to GS1 members a royalty-free licence or a RAND licence to Necessary Claims, as that term is defined in the GS1 IP Policy. Furthermore, attention is drawn to the possibility that an implementation of one or more features of this Specification may be the subject of a patent or other intellectual property right that does not involve a Necessary Claim. Any such patent or other intellectual property right is not subject to the licencing obligations of GS1. Moreover, the agreement to grant licences provided under the GS1 IP Policy does not include IP rights and any claims of third parties who were not participants in the Work Group.

Accordingly, GS1 recommends that any organization developing an implementation designed to be in conformance with this Specification should determine whether there are any patents that may encompass a specific implementation that the organisation is developing in compliance with the Specification and whether a licence under a patent or other intellectual property right is needed. Such a determination of a need for licencing should be made in view of the details of the specific system designed by the organisation in consultation with their own patent counsel.

THIS DOCUMENT IS PROVIDED "AS IS" WITH NO WARRANTIES WHATSOEVER, INCLUDING ANY WARRANTY OF MERCHANTABILITY, NONINFRINGEMENT, FITNESS FOR PARTICULAR PURPOSE, OR ANY WARRANTY OTHERWISE ARISING OUT OF THIS SPECIFICATION. GS1 disclaims all liability for any damages arising from use or misuse of this Standard, whether special, indirect, consequential, or compensatory damages, and including liability for infringement of any intellectual property rights, relating to use of information in or reliance upon this document.

GS1 retains the right to make changes to this document at any time, without notice. GS1 makes no warranty for the use of this document and assumes no responsibility for any errors which may appear in the document, nor does it make a commitment to update the information contained herein.

GS1 and the GS1 logo are registered trademarks of GS1 AISBL.



Table of Contents

1	Business Domain View	5
1.1	Introduction	5
1.2	References	5
2	Business Context	5
3	Business Transaction View	6
3.1	Business Transaction – Issue Outbound Instruction	6
3.2	Business Transaction – Issue Outbound Notification	7
4	Business Information View	9
4.1	Warehousing Outbound Instruction	9
4.2	Warehousing Outbound Instruction – Shipment	11
4.3	Warehousing Outbound Instruction – Shipment Item	13
4.4	Warehousing Outbound Notification	15
4.5	Warehousing Outbound Notification – Shipment	17
4.6	Warehousing Outbound Notification – Shipment Item	20
4.7	Warehousing Outbound Instruction - Data Types	22
4.8	Warehousing Outbound Notification - Data Types	22
4.9	Enumerations (message specific)	24
4.10	Code Lists	24
5	Business Message Examples	25
5.1	Example 1	25
5.2	Example 2	26
5.3	Example 3	27
6	Implementation Considerations	29
6.1	User Guide	29
6.2	Message Specific Considerations	29
7	Summary of Changes	30
7.1	BMS Release 3.1	30
7.2	BMS Release 3.2	30
7.3	BMS Release 3.3	32
7.4	BMS Release 3.4	34
7.5	BMS Release 3.5	34
7.6	BMS Release 3.5.1	34
7.7	BMS Release 3.6	34
8	Appendices	34
9	Acknowledgements	34
9.1.1	Work Group	34
9.1.2	Development Team Members	36

1 Business Domain View

1.1 Introduction

Message Definition

Warehousing Outbound Instruction Message Definition

The Warehousing Outbound Instruction message enables a Logistic Services Client (LSC) to inform his Logistic Services Provider (LSP) that goods need to be shipped.

Warehousing Outbound Notification Message Definition

The Warehousing Outbound Notification message enables a Logistic Services Provider (LSP) to inform his Logistic Services Client (LSC) on the status of goods shipped on behalf of the client.

Principles

These messages support the warehouse outbound process.

1.2 References

[LIM] GS1 Logistics Interoperability Model, 1.0, GS1 2007

[BRAD_WIO] BRAD Warehousing Inbound and Outbound Processes, 1.0, GS1 2012

[BMS_Shared] BMS Shared Common Library, 3.6, GS1 2023

[BMS_eCom] BMS eCom Common Library, 3.6, GS1 2023

[BMS_Warehousing] BMS Warehousing Common Library, 3.6, GS1 2023

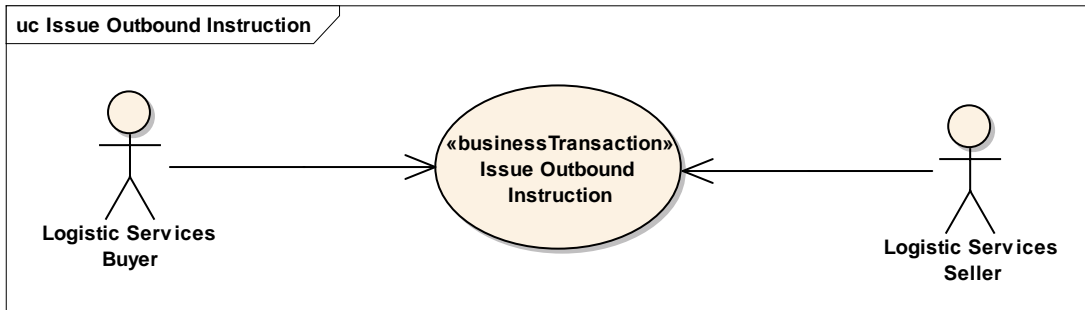
2 Business Context

Context Category	Value(s)
Industry	All
Geopolitical	All
Product	All
Process	Warehousing – Outbound Operations
System Capabilities	GS1 System
Official Constraints	None

3 Business Transaction View

3.1 Business Transaction – Issue Outbound Instruction

Use case diagram



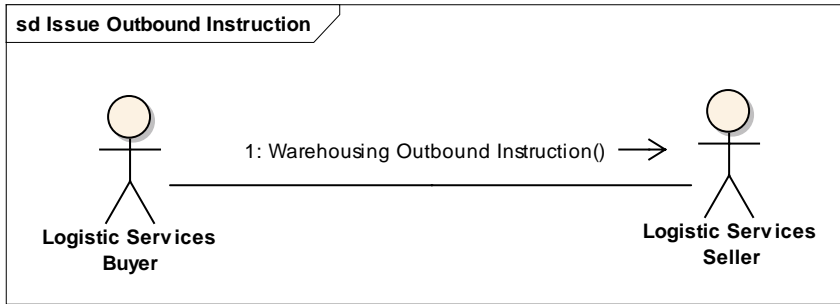
Use case description

Use Case Name	Issue Warehousing Outbound Instruction
Use Case Description	The Logistic Services Buyer (LSB) informs the Logistic Services Seller (LSS) that a shipment needs to be prepared.
Actors (Goal)	Logistic Services Buyer (LSB) Logistic Services Seller (LSS)
Performance Goals	Not applicable
Preconditions	Item master data of the goods to be shipped have been communicated to the Logistic Services Seller.
Post conditions	The Logistic Services Seller has been informed on the goods to be shipped.
Main Scenario	<ul style="list-style-type: none"> ■ LSB generates the Warehousing Outbound Instruction from his (enterprise resource planning) system. ■ LSB sends the Warehousing Outbound Instruction to the LSS. ■ LSS receives the Warehousing Outbound Instruction. ■ LSS processes the Warehousing Outbound Instruction in his (warehouse management) system.
Alternative Scenario(s)	Not applicable
Related Requirements	Not applicable
Related Rules	Not applicable

Activity diagram

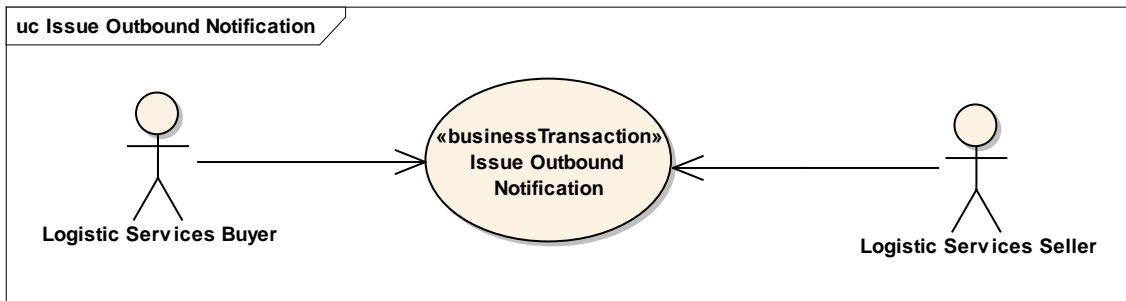
Not applicable

Communication diagram



3.2 Business Transaction – Issue Outbound Notification

Use case diagram



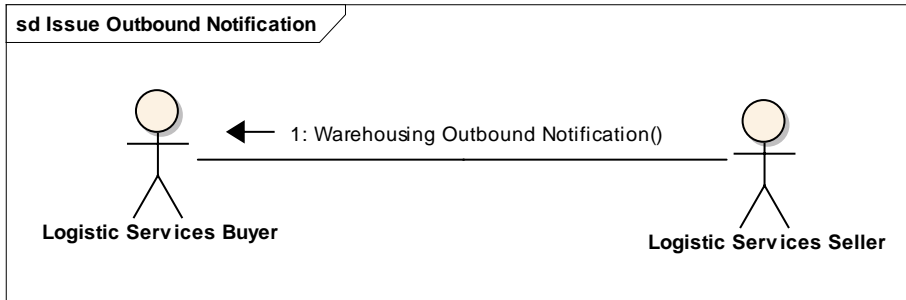
Use case description

Use Case Name	Issue Warehousing Outbound Notification
Use Case Description	The Logistic Services Seller (LSS) informs the Logistic Services Buyer (LSB) on the status of an outbound shipment that will be / has been prepared.
Actors (Goal)	Logistic Services Buyer (LSB) Logistic Services Seller (LSS)
Performance Goals	Not applicable
Preconditions	<ul style="list-style-type: none"> The Logistic Services Seller has been informed on the goods to be shipped.
Post conditions	The Logistic Services Buyer has been informed on the status of the outbound shipment.
Main Scenario	<ul style="list-style-type: none"> LSS generates the Warehousing Outbound Notification from his (warehouse management) system. LSS sends the Warehousing Outbound Notification to the LSB. LSB receives the Warehousing Outbound Notification. LSB processes the Warehousing Outbound Notification in his (enterprise resource planning) system.
Alternative Scenario(s)	Not applicable
Related Requirements	Not applicable
Related Rules	Not applicable

Activity diagram

Not applicable

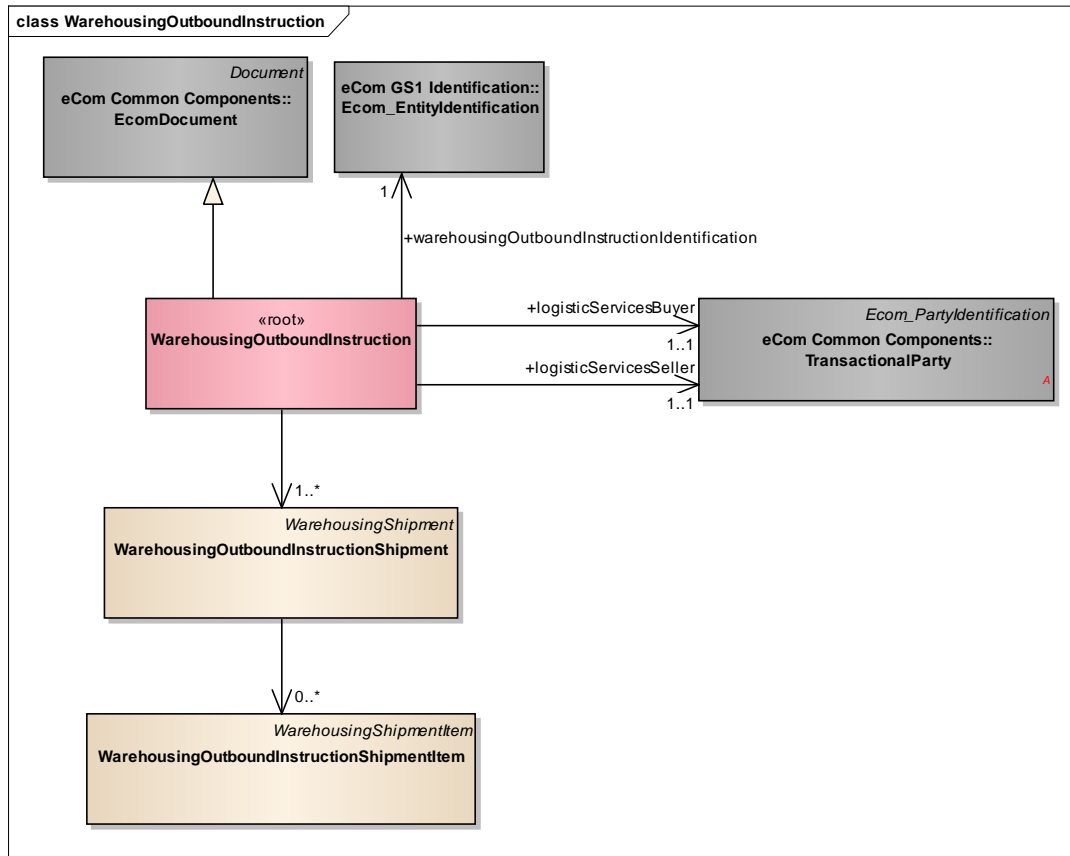
Communication diagram



4 Business Information View

4.1 Warehousing Outbound Instruction

Class diagram



GDD report

The content of the WarehousingOutboundInstruction class, its structure and component definitions can be accessed in the Global Data Dictionary:

http://apps.gs1.org/GDD/bms/Version3_4/Pages/bieDetails.aspx?semanticURN=urn:gs1:gdd:bie:WarehousingOutboundInstruction

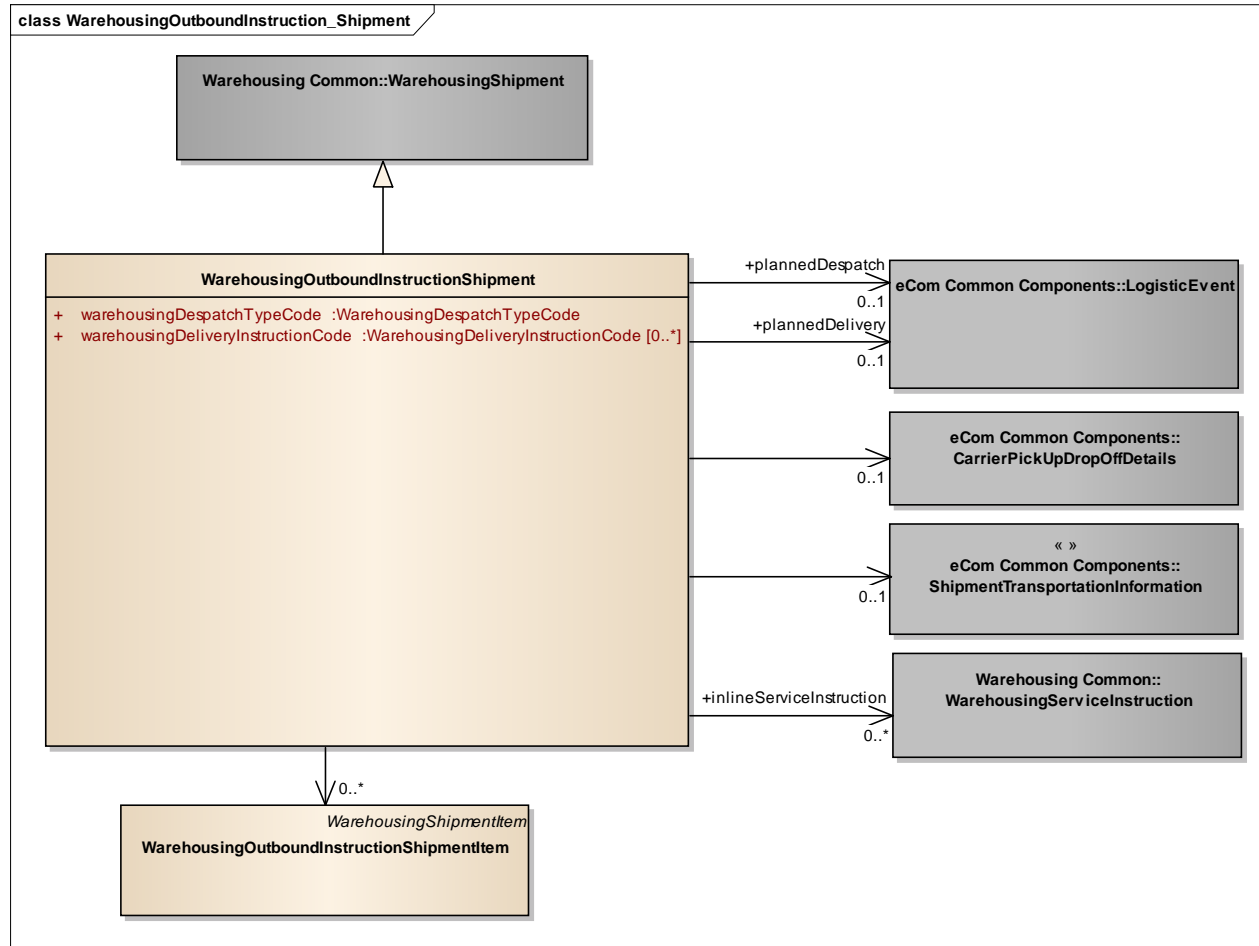
Content	Attribute / Role	Datatype /Secondary class	Multiplicity	Definition	Requirements
WarehousingOutboundInstruction				Message that supports the warehouse outbound process, and enables a Logistic Services Client (LSC) to inform his Logistic Services Provider (LSP) that goods need to be shipped.	
Association		WarehousingOutboundInstructionShipment	1..*	Information on the shipments that need to be prepared by the logistics services seller.	
Generalization		EcomDocument		Basic information about the content of the message including version number, creation date and time.	[brad-whiop:insdes-1]
Association	logisticServices Seller	TransactionalParty	1..1	A party that provides logistics services to another party.	[brad-whiop:insdes-3]
Association	warehousingOutboundInstructionIdentification	Ecom_EntityIdentification	1..1	The identification of the warehousing outbound instruction document.	[brad-whiop:insdes-1] WR 15-000314
Association	logisticServices Buyer	TransactionalParty	1..1	A party that purchases logistics services from another party.	[brad-whiop:insdes-2]



Note: Reference Shared Common Library Business Message (BMS) Release 3.6 and eCom Domain Common Library Business Message (BMS) Release 3.6 for all common information.

4.2 Warehousing Outbound Instruction – Shipment

Class Diagram



GDD Report

The content of the WarehousingOutboundInstructionShipment class, its structure and component definitions can be accessed in the Global Data Dictionary:

http://apps.gs1.org/GDD/bms/Version3_4/Pages/bieDetails.aspx?semanticURN=urn:gs1:gdd:bie:WarehousingOutboundInstructionShipment

Content	Attribute / Role	Datatype /Secondary class	Multiplicity	Definition	Requirements
WarehousingOutboundInstructionShipment				A shipment is an identifiable collection of one or more Trade Items available to be transported together from the shipper (Original Consignor/Shipper), to the receiver (Final/Ultimate Consignee).	[brad-whiop:insdes-4]
Association	plannedDelivery	LogisticEvent	0..1	Details on the date and time the goods need to be delivered.	[brad-whiop:insdes-4.1]
Association		CarrierPickUpDropOffDetails	0..1	Details on the carrier that will deliver the goods.	[brad-whiop:insdes-4.6]
Generalization		WarehousingShipment			
Association	plannedDespatch	LogisticEvent	0..1	Details on the date and time the goods need to be despatched.	[brad-whiop:insdes-4.2]
Association	inlineServiceInstruction	WarehousingServiceInstruction	0..*	Details on one or more services to be performed by the logistic services seller during outbound processing.	[brad-whiop:insdes-4.7]
Association		WarehousingOutboundInstructionShipmentItem	0..*	Details on the items that need to be shipped.	
Association		ShipmentTransportationInformation	0..1	Instructions on the way the shipment needs to be transported.	[brad-whiop:insdes-4.5]
Attribute	warehousingDespatchTypeCode	WarehousingDespatchTypeCode	1..1	Code specifying the type of despatch for the shipment, for example picked from stock or cross-docked.	[brad-whiop:insdes-4.3]

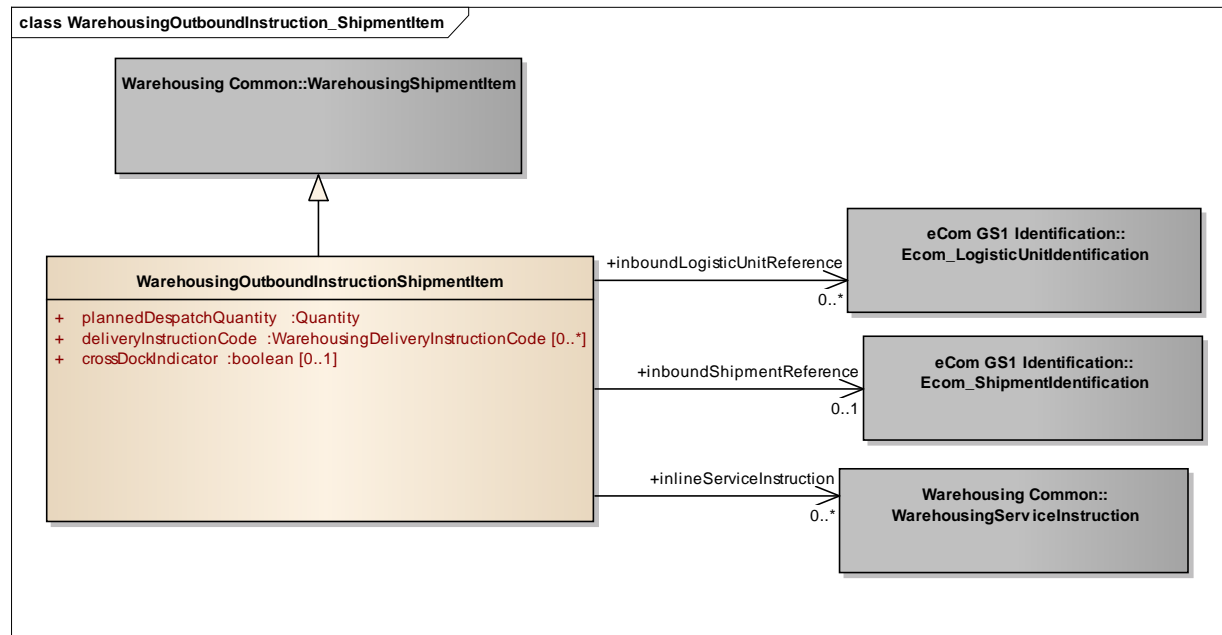
Content	Attribute / Role	Datatype /Secondary class	Multiplicity	Definition	Requirements
Attribute	warehousingDeliveryInstructionCode	WarehousingDeliveryInstructionCode	0..*	Code specifying special order / delivery conditions.	[bradwhiop:insdes-4.4] perhaps reuse some values of OrderInstructionCode



Note: Reference Shared Common Library Business Message (BMS) Release 3.6 and eCom Domain Common Library Business Message (BMS) Release 3.6 for all common information.

4.3 Warehousing Outbound Instruction – Shipment Item

Class Diagram



GDD Report

The content of the WarehousingOutboundInstructionShipmentItem class, its structure and component definitions can be accessed in the Global Data Dictionary:

http://apps.gs1.org/GDD/bms/Version3_4/Pages/bieDetails.aspx?semanticURN=urn:gs1:gdd:bie:WarehousingOutboundInstructionShipmentItem

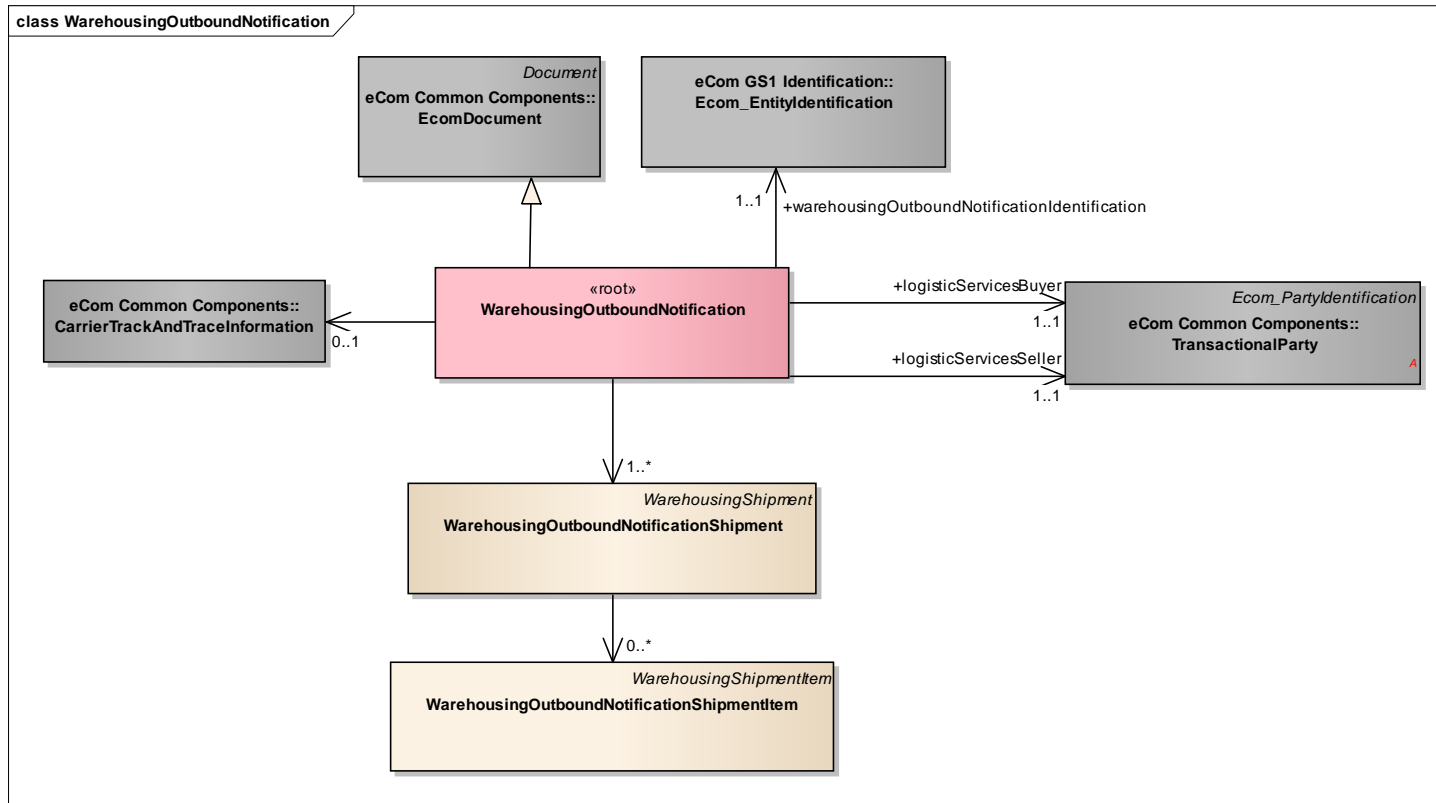
Content	Attribute / Role	Datatype /Secondary class	Multiplicity	Definition	Requirements
WarehousingOutboundInstructionShipmentItem				A shipment item is collection of trade items and related logistic units that can each be identified (uniquely) within a shipment.	[brad-whiop:insdes-5]
Association	inboundShipmentReference	Ecom_ShipmentIdentification	0..1	Reference to the cross-docked receipt from which the item has to be taken.	[brad-whiop:insdes-5.4] WR 15-000314
Generalization		WarehousingShipmentItem			
Association	inboundLogisticUnitReference	Ecom_LogisticUnitIdentification	0..*	Reference to the cross-docked logistic unit from which the item has to be taken.	[brad-whiop:insdes-5.5] WR 15-000314
Association	inlineServiceInstruction	WarehousingServiceInstruction	0..*	Instruction specifying a service to be carried out by the logistic services seller during the inbound process.	[brad-whiop:insdes-5.6]
Attribute	plannedDespatchQuantity	Quantity	1..1	The quantity that is ordered / planned to be despatched.	[brad-whiop:insdes-5.1]
Attribute	deliveryInstructionCode	WarehousingDeliveryInstructionCode	0..*	Code specifying special order / delivery conditions.	[brad-whiop:insdes-5.2] perhaps reuse some values of OrderInstructionCode
Attribute	crossDockIndicator	boolean	0..1	Indication whether or not the shipped item needs to be taken from a cross-docked receipt instead of from stock.	



Note: Reference Shared Common Library Business Message (BMS) Release 3.6 and eCom Domain Common Library Business Message (BMS) Release 3.6 for all common information.

4.4 Warehousing Outbound Notification

Class Diagram



GDD Report

The content of the WarehousingOutboundNotification class, its structure and component definitions can be accessed in the Global Data Dictionary: http://apps.gs1.org/GDD/bms/Version3_4/Pages/bieDetails.aspx?semanticURN=urn:gs1:gdd:bie:WarehousingOutboundNotification



Content	Attribute / Role	Datatype /Secondary class	Multiplicity	Definition	Requirements
WarehousingOutboundNotification				Message that supports the warehouse outbound process, and enables a Logistic Services Provider (LSP) to inform his Logistic Services Client (LSC) on the status of goods shipped on behalf of the client.	
Generalization		EcomDocument		Basic information about the content of the message including version number, creation date and time.	[brad-whiop:obsta-1]
Association		WarehousingOutboundNotificationShipment	1..*	Status information on the shipments that have been shipped or are expected to be shipped.	
Association	logisticServices Seller	TransactionalParty	1..1	A party that provides logistics services to another party.	[brad-whiop:obsta-3]
Association	logisticServices Buyer	TransactionalParty	1..1	A party that purchases logistics services from another party.	[brad-whiop:obsta-2]
Association	warehousingOutboundNotificationIdentification	Ecom_EntityIdentification	1..1	The identification of the warehousing outbound notification document.	[brad-whiop:obsta-1] WR 15-000314
Association		CarrierTrackAndTraceInformation	0..1	Tracking and tracing information about the package, provided by the carrier.	WR 15-000314

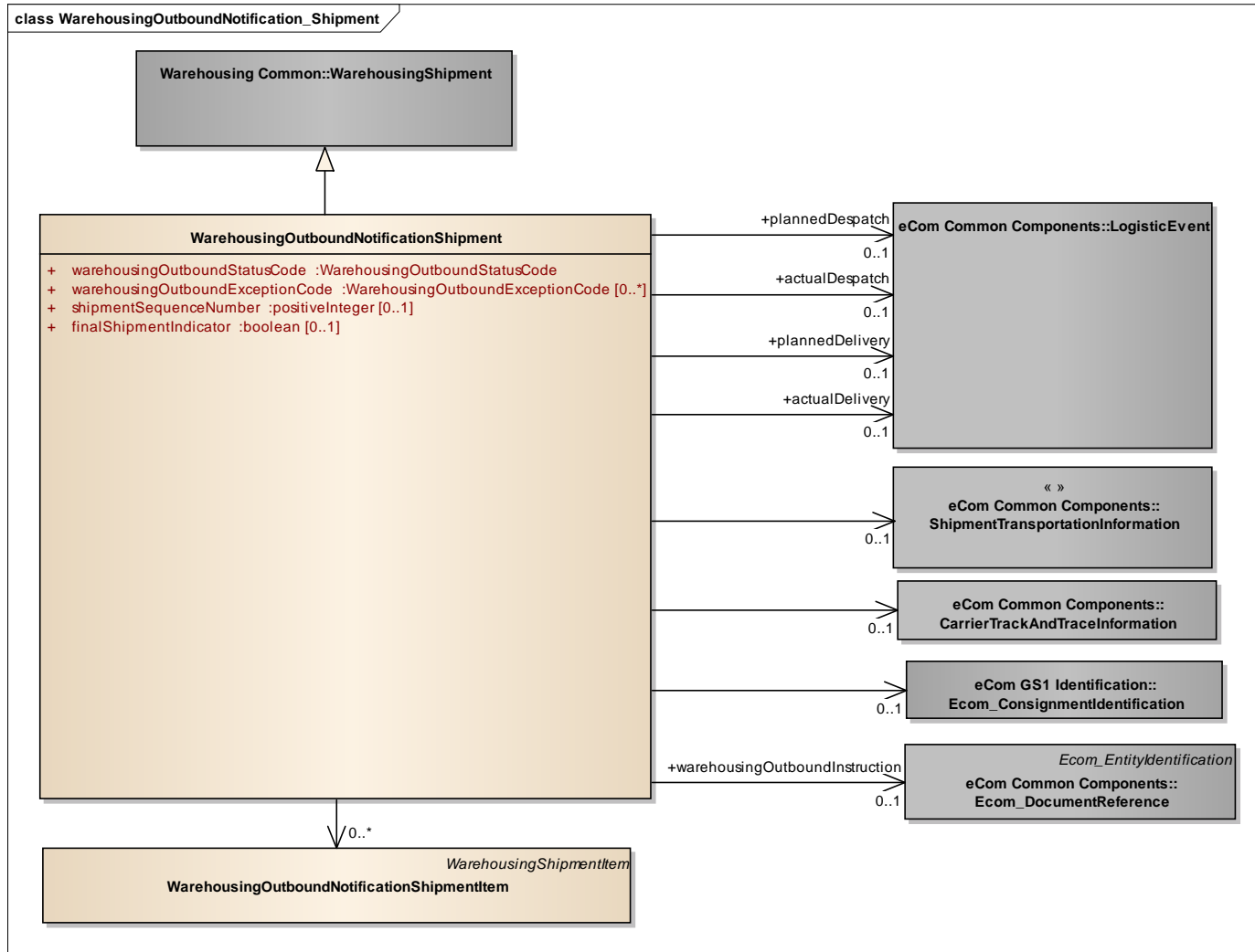


Note: Reference Shared Common Library Business Message (BMS) Release 3.6 and eCom Domain Common Library Business Message (BMS) Release 3.6 for all common information.



4.5 Warehousing Outbound Notification – Shipment

Class Diagram





GDD Report

The content of the WarehousingOutboundNotificationShipment class, its structure and component definitions can be accessed in the Global Data Dictionary:

http://apps.gs1.org/GDD/bms/Version3_4/Pages/bieDetails.aspx?semanticURN=urn:gs1:gdd:bie:WarehousingOutboundNotificationShipment

Content	Attribute / Role	Datatype /Secondary class	Multiplicity	Definition	Requirements
WarehousingOutboundNotificationShipment				A shipment is an identifiable collection of one or more Trade Items available to be transported together from the shipper (Original Consignor/Shipper), to the receiver (Final/Ultimate Consignee).	[brad-whiop:obsta-4]
Association	actualDelivery	LogisticEvent	0..1	Details on the date and time the goods were actually delivered.	[brad-whiop:obsta-4.7]
Association		Ecom_ConsignmentIdentification	0..1	Identification of the consignment that contains the shipment.	[brad-whiop:obsta-4.10.2] WR 15-000314
Generalization		WarehousingShipment			
Association	plannedDelivery	LogisticEvent	0..1	Details on the date and time the goods were planned to be delivered.	[brad-whiop:obsta-4.6]
Association		CarrierTrackAndTraceInformation	0..1	Package tracking and tracing references provided by the Carrier.	
Association	warehousingOutboundInstruction	DocumentReference	0..1	A reference to the related outbound instruction message.	
Association		WarehousingOutboundNotificationShipmentItem	0..*	Details on the items contained in the shipment.	
Association	plannedDespatch	LogisticEvent	0..1	Details on the date and time the goods were planned to be despatched.	[brad-whiop:obsta-4.4]
Association	actualDespatch	LogisticEvent	0..1	Details on the date and time the goods were actually despatched.	[brad-whiop:obsta-4.5]
Association		ShipmentTransportationInformation	0..1	Information on the way the shipment was transported.	[brad-whiop:obsta-4.10.1]



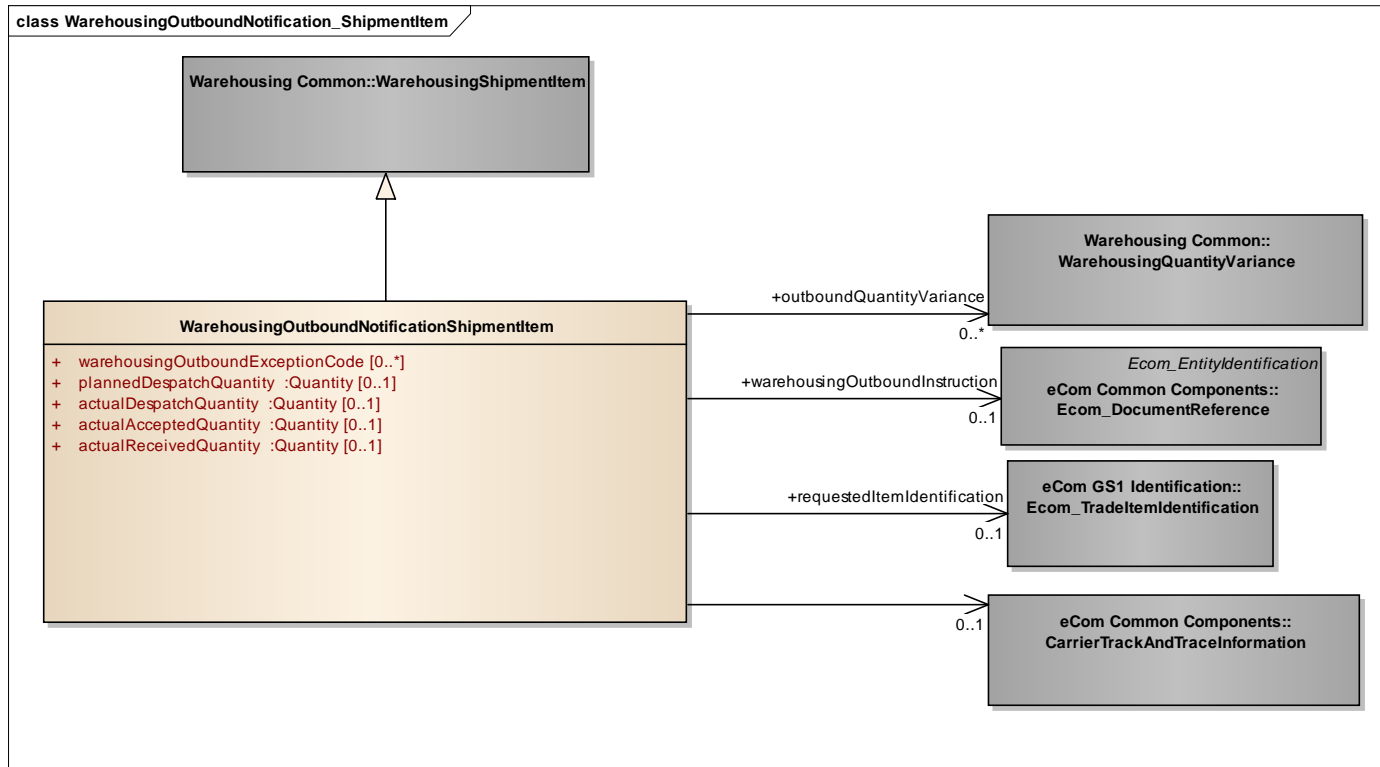
Content	Attribute / Role	Datatype /Secondary class	Multiplicity	Definition	Requirements
Attribute	warehousingOutboundStatusCode	WarehousingOutboundStatusCode	1..1	Code specifying the status of the outbound delivery.	[brad_wio:ibsta-4.2]
Attribute	warehousingOutboundExceptionCode	WarehousingOutboundExceptionCode	0..*	Codes specifying an exception that occurred during the outbound process.	[brad_wio:ibsta-4.3]
Attribute	shipmentSequenceNumber	positiveInteger	0..1	A number indicating the sequence in which shipments related to the same delivery were despatched.	
Attribute	finalShipmentIndicator	boolean	0..1	Indicator specifying if a shipment, being one of multiple shipments for the same delivery, is the final shipment. See also shipmentSequenceNumber.	



Note: Reference Shared Common Library Business Message (BMS) Release 3.6 and eCom Domain Common Library Business Message (BMS) Release 3.6 for all common information.

4.6 Warehousing Outbound Notification – Shipment Item

Class Diagram



GDD Report

The content of the WarehousingOutboundNotificationShipmentItem class, its structure and component definitions can be accessed in the Global Data Dictionary:

http://apps.gs1.org/GDD/bms/Version3_4/Pages/bieDetails.aspx?semanticURN=urn:gs1:gdd:bie:WarehousingOutboundNotificationShipmentItem



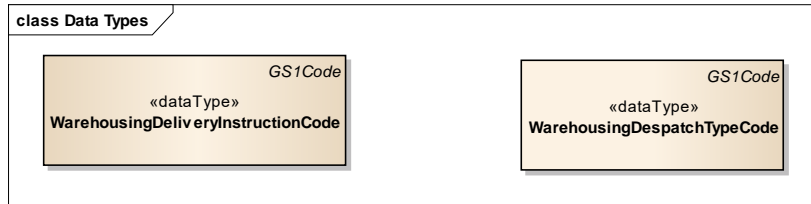
Content	Attribute / Role	Datatype /Secondary class	Multiplicity	Definition	Requirements
WarehousingOutbound NotificationShipmentItem				A shipment item is collection of trade items and related logistic units that can each be identified (uniquely) within a shipment.	[brad-whiop:obsta-5]
Association		CarrierTrackAndTraceInformation	0..1	Package tracking and tracing references provided by the Carrier.	WR 15-000314
Association	requestedItemIdentification	Ecom_TradeItemIdentification	0..1	The identification of the trade item that was requested to be delivered, but was replaced with another trade item.	
Generalization		WarehousingShipmentItem			
Association	warehousingOutboundInstruction	Ecom_DocumentReference	0..1	A reference to the related line item in the outbound instruction.	WR 15-000314
Association	outboundQuantityVariance	WarehousingQuantityVariance	0..*	Quantity and reason of a shortage or surplus occurring in a warehousing process.	[brad-whiop:obsta-5.7]
Attribute	warehousingOutboundExceptionCode		0..*	Codes specifying an exception that occurred during the outbound process.	[brad_wio:obsta-5.2]
Attribute	plannedDespatchQuantity	Quantity	0..1	The number of items that were planned to be despatched.	[brad_wio:obsta-5.3]
Attribute	actualDespatchQuantity	Quantity	0..1	The number of items that were despatched.	[brad_wio:obsta-5.4]
Attribute	actualAcceptedQuantity	Quantity	0..1	The number of items that were accepted by the receiver.	[brad_wio:obsta-5.5]
Attribute	actualReceivedQuantity	Quantity	0..1	The number of items that were received by the receiver.	[brad_wio:obsta-5.6]



Note: Reference Shared Common Library Business Message (BMS) Release 3.6 and eCom Domain Common Library Business Message (BMS) Release 3.6 for all common information.

4.7 Warehousing Outbound Instruction - Data Types

Class Diagram



GDD Report

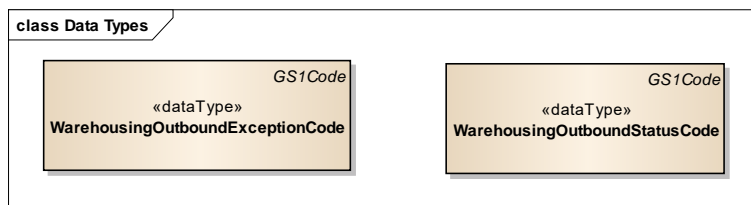
Content	Attribute / Role	Datatype /Secondary class	Multiplicity	Definition	Requirements
WarehousingDeliveryInstructionCode					
Generalization		GS1Code			
WarehousingDespatchTypeCode					
Generalization		GS1Code			



Note: Reference Shared Common Library Business Message (BMS) Release 3.6 and eCom Domain Common Library Business Message (BMS) Release 3.6 for all common information.

4.8 Warehousing Outbound Notification - Data Types

Class Diagram



GDD Report

Content	Attribute / Role	Datatype /Secondary class	Multiplicity	Definition	Requirements
WarehousingOutboundExceptionCode					
Generalization		GS1Code			



Content	Attribute / Role	Datatype /Secondary class	Multiplicity	Definition	Requirements
WarehousingOutboundStatusCode					
Generalization		GS1Code			



Note: Reference Shared Common Library Business Message (BMS) Release 3.6 and eCom Domain Common Library Business Message (BMS) Release 3.6 for all common information.

4.9 Enumerations (message specific)

Not applicable

4.10 Code Lists

Class	Codelist	GDD Link
WarehousingOutboundInstructionShipment, WarehousingOutboundInstructionShipmentItem	WarehousingDeliveryInstructionCode	http://apps.gs1.org/GDD/Pages/clDetails.aspx?semanticURN=urn:gs1:gdd:cl:WarehousingDeliveryInstructionCode
WarehousingOutboundInstructionShipment	WarehousingDespatchTypeCode	http://apps.gs1.org/GDD/Pages/clDetails.aspx?semanticURN=urn:gs1:gdd:cl:WarehousingDespatchTypeCode
WarehousingOutboundNotificationShipment	WarehousingOutboundExceptionCode	http://apps.gs1.org/GDD/Pages/clDetails.aspx?semanticURN=urn:gs1:gdd:cl:WarehousingOutboundExceptionCode
WarehousingOutboundNotificationShipment	WarehousingOutboundStatusCode	http://apps.gs1.org/GDD/Pages/clDetails.aspx?semanticURN=urn:gs1:gdd:cl:WarehousingOutboundStatusCode



Note: Refer to the Global Data Dictionary (GDD) for the code values.

5 Business Message Examples

5.1 Example 1

This is an example of the Warehousing Outbound Instruction message.

Party Information

GS1 Global Location Number	Party Type
3333333000001	Logistic Services Seller
2222222000004	Logistic Services Buyer
3333333000018	Shipper
4444444000008	Receiver

Message Example 1

Attribute	Value
WarehousingOutboundInstruction	
creationDateTime	2012-07-17 12:15
documentStatusCode	ORIGINAL
documentActionCode	ADD
EntityIdentification (+warehousingOutboundInstructionIdentification)	
entityIdentification	INSDDES00123
TransactionalParty (+logisticServicesSeller)	
gln	3333333000001
TransactionalParty (+logisticServicesBuyer)	
gln	2222222000004
WarehousingOutboundInstructionShipment (+)	
warehousingDespatchTypeCode	WAREHOUSE_SHIPMENT
TransactionalParty (+receiver)	
gln	4444444000008
TransactionalParty (+shipper)	
gln	3333333000018
ShipmentTransportationInformation (+)	
transportServiceCategoryType	30
transportServiceLevelCode	STANDARD_SERVICE
LogisticEvent (+plannedDelivery)	
DateTimeRange (+logisticEventPeriod)	
beginDate	2012-07-18
beginTime	15:00
endDate	2012-07-18
endTime	16:00

Attribute	Value
WarehousingOutboundInstructionShipmentItem	
lineItemNumber	1
plannedDespatchQuantity	30
TransactionalTradeItem (+)	
gtin	01111111000120
WarehousingServiceInstruction (+inlineServiceInstruction)	
warehousingServiceConditionCode	BUILD_PALLET
WarehousingServiceAttribute (+)	
warehousingServiceAttributeTypeCode	PALLET_HEIGHT
warehousingServiceAttributeMeasurement	180 cm

5.2 Example 2

This is an example of the Warehousing Outbound Notification message.

Message Example 2

Attribute	Value
WarehousingOutboundNotification	
creationDateTime	2012-07-18 12:15
documentStatusCode	ORIGINAL
documentActionCode	ADD
EntityIdentification (+warehousingOutboundNotificationIdentification)	
entityIdentification	OBSTA00113
TransactionalParty (+logisticServicesSeller)	
gln	3333333000001
TransactionalParty (+logisticServicesBuyer)	
gln	2222222000004
WarehousingOutboundNotificationShipment	
warehousingOutboundStatusCode	READY_TO_SHIP
TransactionalParty (+receiver)	
gln	4444444000008
TransactionalParty (+shipper)	gln: 3333333000018
ShipmentIdentification (+)	
gsin	33333330000114050
WarehousingOutboundNotificationShipmentItem	
lineItemNumber	1
warehousingOutboundExceptionCode	QUANTITY_ROUNDED
plannedDespatchQuantity	30

Attribute	Value
actualDespatchQuantity	32
TransactionalTradeItem (+)	
gtin	01111111000120
WarehousingQuantityVariance (+outboundQuantityVariance)	
varianceQuantity	2
warehousingQuantityVarianceCode	QUANTITY_OVER
LogisticUnit	
tradeItemQuantity	16
LogisticUnitIdentification (+)	
sscc	133333330000003450
LogisticUnit	
tradeItemQuantity	16
LogisticUnitIdentification (+)	
sscc	133333330000003450

5.3 Example 3

This is a **complex example** of the Warehousing Outbound Instruction message. Logistic Services Buyer 2222222 instructs his Logistic Services Seller (3333333, the warehouse service provider) that goods need to be shipped and transported as follows:

- By a LSB designated carrier (5555555) to an LSB designated freight forwarder (6666666).
- Freight forwarder (6666666) will transport the goods overseas to a de-consolidation centre (4444444001104) controlled by the customer (4444444).
- From there the customer will arrange transport to the final customer location (4444444002224).

Message Example 3

Attribute	Value	Comment
WarehousingOutboundInstruction		
creationDateTime	2012-07-17 12:15	
documentStatusCode	ORIGINAL	
documentActionCode	ADD	
EntityIdentification (+warehousingOutboundInstructionIdentification)		
entityIdentification	INSD00123	
TransactionalParty (+logisticServicesSeller)		
gln	3333333000001	The LS SELLER has a single central GLN to identify the single Integration Services Point of Contact for that LSS.
TransactionalParty (+logisticServicesBuyer)		
gln	2222222000004	The LS BUYER has a single central GLN to identify the single Integration Services Point of Contact for that LSB.



Attribute	Value	Comment
WarehousingOutboundInstructionShipment (+)		
warehousingDespatchTypeCode	WAREHOUSE_SHIPMENT	
TransactionalParty (+receiver)		Identifies one of multiple entities within the Customers (Material Buyer) organisation.
gln	4444444000008	
TransactionalParty (+shipper)		Identifies the warehouse from which the LSS is expected to despatch the Order. The LS SELLER may operate many different warehousing sites even multiple different sites for the same LS BUYER. The GLN used to identify the sites are the GLN assigned and owned by the LS SELLER.
gln	3333333000018	
TransactionalParty (+shipTo)		Identifies the facility (de-consolidation centre) where the Customer wants to get the Order delivered to by the forwarder. This GLN is assigned by the Customer who may operate many different facilities each of which (may be) identified with a GLN. The Customer should then also clearly identify/include this GLN in the Order placed on the Material Supplier (the LS BUYER).
gln	4444444001104	
TransactionalParty (+ultimateConsignee)		Identifies the final delivery location for the Order. This GLN is assigned by the Customer (who is ultimately responsible for the delivery to this point). Clearly the Customer should include the appropriate GLN for the ultimateConsignee in the original Order placed on the Material Supplier (the LS BUYER).
gln	4444444002224	
ShipmentTransportationInformation (+)		
transportServiceCategoryType	30	
transportServiceLevelCode	STANDARD_SERVICE	
TransactionalParty (+carrier)		Identifies the specific entity within the Carriers organisation that will be responsible for the physical movement of the Order from the warehouse
gln	5555555000005	
TransactionalParty (+freightForwarder)		Identifies the location of the freight forwarder where the goods need to be dropped-off.
gln	6666666000002	
LogisticEvent (+plannedDelivery)		

Attribute	Value	Comment
DateOptionalTime (+logisticEventDateTime)		
date	2012-07-25	
WarehousingOutboundInstructionShipmentItem		
lineItemNumber	1	
plannedDespatchQuantity	30	
TransactionalTradeItem (+)		
gtin	01111111000120	

6 Implementation Considerations

6.1 User Guide

The Functional User Guide contains more information about the structure and content of the Warehouse Outbound Instruction and Notification message:
http://www.gs1.org/docs/ecom/xml/3/3.4/eCom-Trade_messages.html#WarehouseOutboundInstructionandNotification

6.2 Message Specific Considerations

Not applicable

7 Summary of Changes

Any change in the GS1 standards is done based on the Work Request (WR) submitted by the GS1 User Companies or Member Organisations. All Work Requests are documented in the Work Request system available on the GS1 website: <http://wr.gs1.org>. The system is accessible to registered users. New visitors need to register first, to be able to access it. WRs can be searched by the number referenced in tables below, see: Search Work Requests. The number starts with the two last digits of the year when it was submitted, followed by the consecutive number within that year.

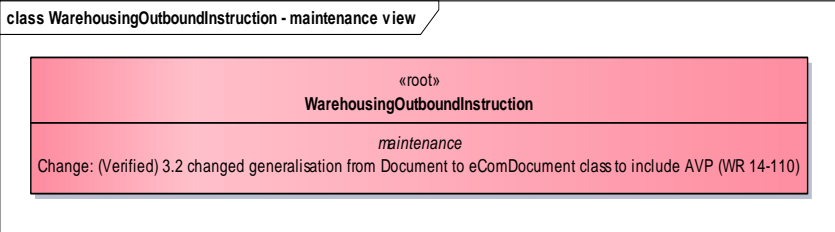
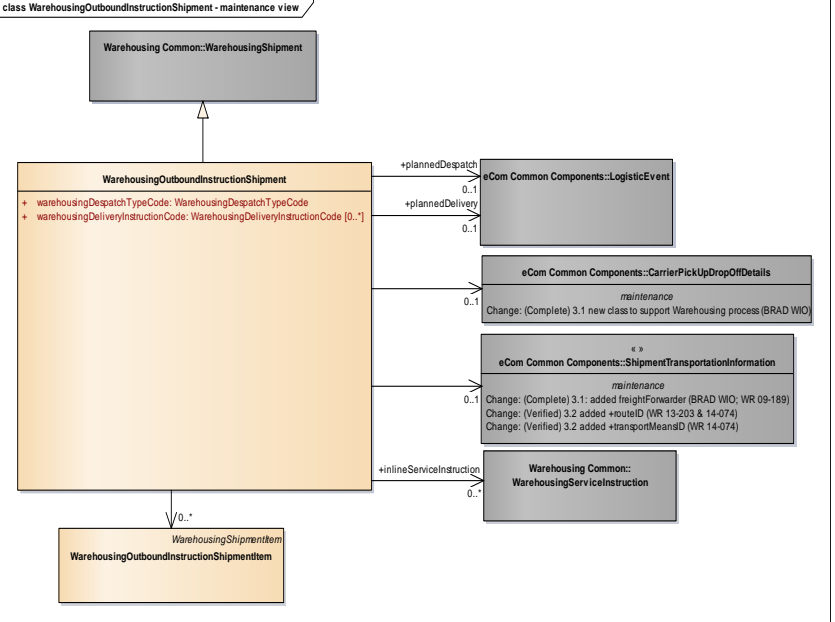


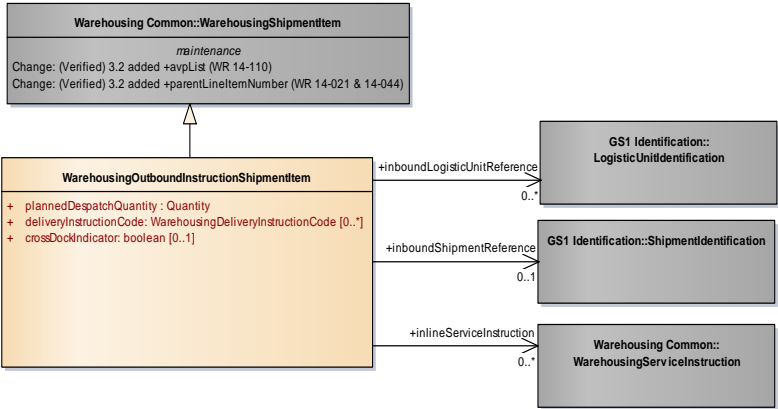
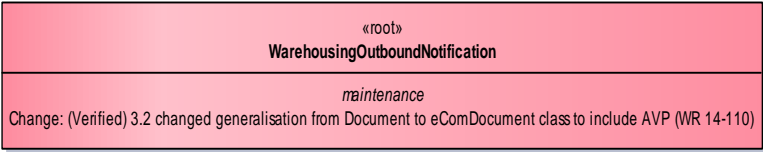

Note: WRs submitted earlier than February 2012 should be searched in Old Change Requests.

7.1 BMS Release 3.1

First release

7.2 BMS Release 3.2

Change	Associated WR
<p>class WarehousingOutboundInstruction - maintenance view</p> 	<p>14-000110 Add Attribute Value Pair at the root, line item and sub line item levels</p>
<p>class WarehousingOutboundInstructionShipment - maintenance view</p> 	<p>14-000074 Add route of the transport and or truck-ID in a GS1 SML warehouse outbound instruction message</p>

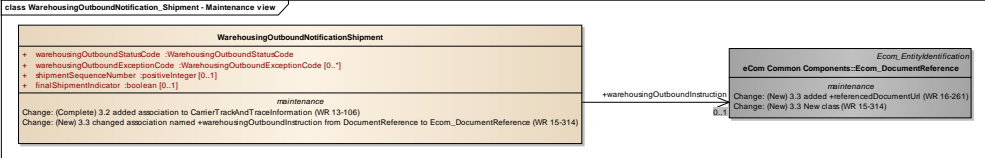
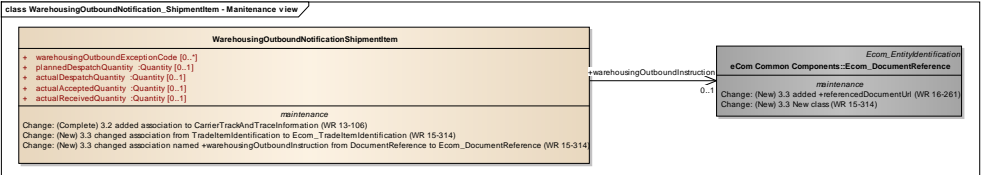
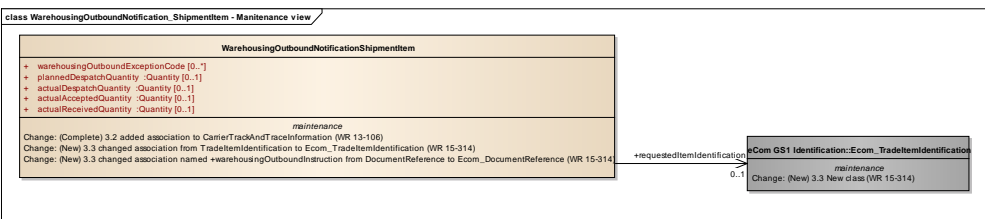
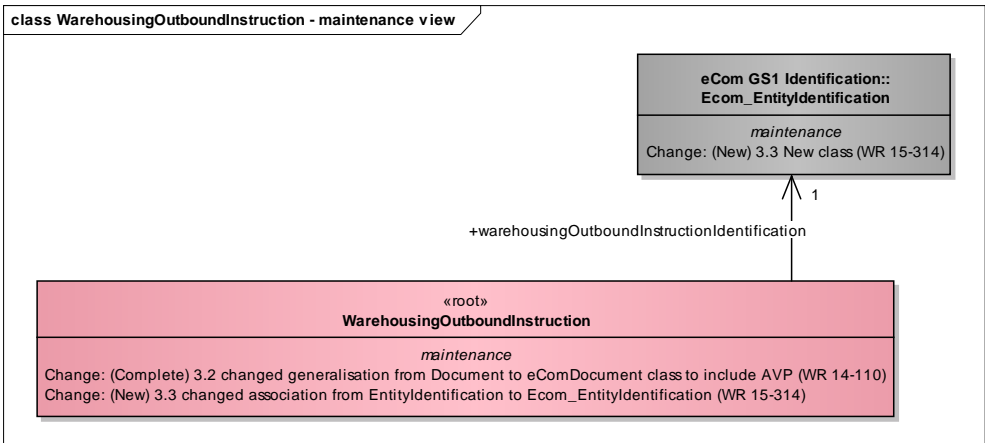
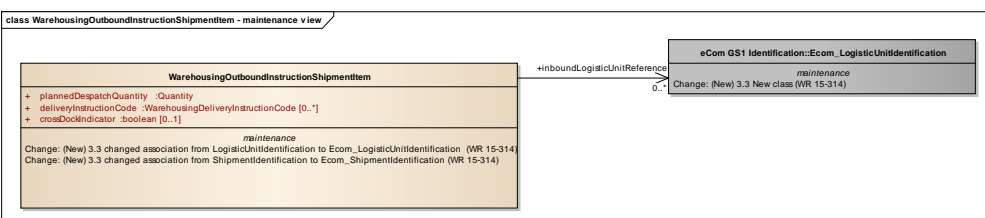
Change	Associated WR
<p>class WarehousingOutboundInstructionShipmentItem - maintenance view</p> 	<p>14-000110 Add Attribute Value Pair at the root, line item and sub line item levels</p>
<p>class WarehousingOutboundNotification - maintenance view</p> 	<p>14-000110 Add Attribute Value Pair at the root, line item and sub line item levels</p>
<p>class WarehousingOutboundNotification_Shipment - Maintenance view</p> 	<p>13-000106 Add to warehousing messages carrier track and trace information with: package tracking number and carrier track and trace URL.</p>

Change	Associated WR
<p>class WarehousingOutboundNotification_ShipmentItem - Maintenance view</p> <div style="border: 1px solid black; padding: 5px; margin: 5px 0;"> <p style="text-align: center;">WarehousingOutboundNotificationShipmentItem</p> <ul style="list-style-type: none"> + warehousingOutboundExceptionCode [0..*] + plannedDespatchQuantity: Quantity [0..1] + actualDespatchQuantity: Quantity [0..1] + actualAcceptedQuantity: Quantity [0..1] + actualReceivedQuantity: Quantity [0..1] <p style="text-align: center;"><i>maintenance</i></p> <p>Change: (Verified) 3.2 added association to CarrierTrackAndTraceInformation (WR 13-106)</p> </div>	<p>WR 13-106</p> <p>Add to warehousing messages carrier track and trace information with: package tracking number and carrier track and trace URL.</p> <p>WR 14-110</p> <p>Add Attribute Value Pair at the root, line item and sub line item levels</p>

7.3 BMS Release 3.3

Change	Associated WR
<p>Created Ecom_EntityIdentification class and changed association from the previous EntityIdentification</p> <p>class WarehousingOutboundNotification - maintenance view</p> <div style="border: 1px solid black; padding: 5px; margin: 5px 0;"> <div style="text-align: center; border: 1px solid black; padding: 5px; width: fit-content; margin: 0 auto;"> <p>eCom GS1 Identification:: Ecom_EntityIdentification</p> <p><i>maintenance</i></p> <p>Change: (New) 3.3 New class (WR 15-314)</p> </div> <p style="text-align: center;">↑ 1..1</p> <p style="text-align: center;">+warehousingOutboundNotificationIdentification</p> <div style="border: 1px solid black; padding: 5px; margin: 5px auto; width: 80%;"> <p style="text-align: center;">«root»</p> <p style="text-align: center;">WarehousingOutboundNotification</p> <p style="text-align: center;"><i>maintenance</i></p> <p>Change: (Complete) 3.2 changed generalisation from Document to eComDocument to include AVP (WR 14-110)</p> <p>Change: (New) 3.3 added association to CarrierTrackAndTraceInformation (WR 13-106)</p> <p>Change: (New) 3.3 changed association from EntityIdentification to Ecom_EntityIdentification (WR 15-314)</p> </div> </div>	<p>15-000314</p> <p>Make GS1 identification keys optional in GS1 EDI XML</p>
<p>Associated CarrierTrackAndTraceInformation class</p> <p>class WarehousingOutboundNotification - maintenance view</p> <div style="border: 1px solid black; padding: 5px; margin: 5px 0;"> <div style="border: 1px solid black; padding: 5px; width: fit-content; margin: 0 auto;"> <p style="text-align: center;">eCom Common Components:: CarrierTrackAndTraceInformation</p> <p style="text-align: center;"><i>maintenance</i></p> <p>Change: (Complete) 3.2 new class (WR 13-106)</p> </div> <p style="text-align: center;">← 0..1</p> <div style="border: 1px solid black; padding: 5px; margin: 5px auto; width: 80%;"> <p style="text-align: center;">«root»</p> <p style="text-align: center;">WarehousingOutboundNotification</p> <p style="text-align: center;"><i>maintenance</i></p> <p>Change: (Complete) 3.2 changed generalisation from Document to eComDocument to include AVP (WR 14-110)</p> <p>Change: (New) 3.3 added association to CarrierTrackAndTraceInformation (WR 13-106)</p> <p>Change: (New) 3.3 changed association from EntityIdentification to Ecom_EntityIdentification (WR 15-314)</p> </div> </div>	<p>13-000106</p> <p>Add carrier track and trace information to warehousing messages</p>



Change	Associated WR
<p>Created Ecom_DocumentReference class and changed association from the previous DocumentReference</p> 	<p>15-000314 Make GS1 identification keys optional in GS1 EDI XML</p>
<p>Created Ecom_DocumentReference class and changed association from the previous DocumentReference</p> 	<p>15-000314 Make GS1 identification keys optional in GS1 EDI XML</p>
<p>Created Ecom_TradeItemIdentification class and changed association from the previous TradeItemIdentification</p> 	<p>15-000314 Make GS1 identification keys optional in GS1 EDI XML</p>
<p>Created Ecom_EntityIdentification class and changed association from the previous EntityIdentification</p> 	<p>15-000314 Make GS1 identification keys optional in GS1 EDI XML</p>
<p>Created Ecom_LogisticUnitIdentification class and changed association from the previous LogisticUnitIdentification</p> 	<p>15-000314 Make GS1 identification keys optional in GS1 EDI XML</p>

Change	Associated WR
<p>Created Ecom_ShipmentIdentification class and changed association from the previous ShipmentIdentification</p> <pre> classDiagram class WarehouseingOutboundInstructionShipmentItem { +plannedDespatchQuantity :Quantity +deliveryInstructionCode :WarehouseingDeliveryInstructionCode [0..*] +crossDocIndicator :boolean [0..1] } class Ecom_GS1_Identification_Ecom_ShipmentIdentification { } WarehouseingOutboundInstructionShipmentItem "0..1" --> "0..1" Ecom_GS1_Identification_Ecom_ShipmentIdentification : +inboundShipmentReference </pre> <p>Change: (New) 3.3 changed association from LogisticUnitIdentification to Ecom_LogisticUnitIdentification (WR 15-314) Change: (New) 3.3 changed association from ShipmentIdentification to Ecom_ShipmentIdentification (WR 15-314)</p>	<p>15-000314 Make GS1 identification keys optional in GS1 EDI XML</p>

7.4 BMS Release 3.4

No work requests. Indirect changes due to upgrade to new Shared and eCom Common libraries.

7.5 BMS Release 3.5

No work requests. Indirect changes due to upgrade to new Shared and eCom Common libraries.

7.6 BMS Release 3.5.1

No work requests. Indirect changes due to upgrade to new Shared and eCom Common libraries.

7.7 BMS Release 3.6

No work requests. Indirect changes due to upgrade to new Shared and eCom Common libraries.

8 Appendices

Not Applicable

9 Acknowledgements

9.1.1 Work Group

Function	Name	Company / organisation
Co-chair	Rossner (Pottier), Natascha	GS1 France
Co-chair	Schmidt, Tom Eric	August Storck KG
Member	Bemrose, Jonathan	R&R Ice Cream
Member	Bodemer, Petra	dm-drogerie markt GmbH + Co. KG
Member	Boikanyo, Rebone	GS1 South Africa / Consumer Goods Council of South Africa
Member	Canada, ON	M3B 3L1
Member	Carlson, Jim	General Mills, Inc.
Member	Chresta, Richard	GS1 Switzerland
Member	Cook, Don	Wal-Mart Stores, Inc.
Member	Cox, Marc	Philips Electronics N.V.
Member	Darnell, David	Systrends



Function	Name	Company / organisation
Member	De Flou, Nele	GS1 Belgium & Luxembourg
Member	Dicks, Arne	GS1 Germany
Member	Duvinger, Karina	GS1 Sweden
Member	Foerderer, Klaus	GS1 Germany
Member	Gathmann, Stefan	GS1 Ireland
Member	Grangard, Anders	GS1 Global Office
Member	Harpell, Eileen	GS1 Community Room Staff
Member	Hand, Phil	JDA Software
Member	Herregodts, Kurt	GS1 Belgium & Luxembourg
Member	Kempkes, Fred	Unilever N.V.
Member	Kernan, Brendan	GS1 Ireland
Member	Kidd, Robin	Nestle
Member	Krid, Anne-Claire	GS1 France
Member	Lanoue, Tom	General Mills, Inc.
Member	Laur, Rita	GS1 Canada
Member	Lenman, Mia	GS1 Sweden
Member	Lerch, Hanjoerg	METRO Group
Member	Moberg, Dale	Axway
Member	Montes de Oca, Alejandra	GS1 Mexico
Member	Ng, Ella	GS1 Australia
Member	Peelen, Esther	GS1 Netherlands
Member	Pelekies, Andreas	GS1 Germany
Member	Perrier, Patricia	GS1 France
Member	Przybilla, Christian	GS1 Germany
Member	Pujol, Xavier	GS1 Spain
Member	Racek, Greg	Wal-Mart Stores, Inc.
Member	Repetto, Mirko	GS1 Italy
Member	Robba, Steven	1WorldSync Holdings, Inc.
Member	Rosell, Pere	GS1 Spain
Member	Rosenberg, Steven	GS1 US
Member	Schmid, Sue	GS1 Australia
Member	Schneider, Christian	GS1 Switzerland
Member	Sehorz, Eugen	GS1 Austria
Member	Sharma, Vishal	General Mills, Inc.
Member	Shimazaki, Ayako	GS1 Japan
Member	Sion, Emilie	GS1 France
Member	Souza, Nadia	GS1 Brasil
Member	Strand, Roman	GS1 Germany
Member	Tan, Milton	GS1 Malaysia
Member	Tompsett, Simon	Waitrose

Function	Name	Company / organisation
Member	Trelle, Ute	1WorldSync Holdings, Inc.
Member	Tse, Steve	GS1 Hong Kong
Member	Tyson, Betty	Knouse Foods Cooperative, Inc
Member	Van den Bergh, Senne	GS1 Belgium & Luxembourg
Member	Van der Eijk, Pim	OASIS - Sonnenglanz Consulting BV
Member	Veldhuis, Saskia	Procter & Gamble Co.
Member	Welch, Shan	GS1 UK
Member	Westerkamp, Jan	GS1 Netherlands
Member	Wilson, Mary	GS1 US
Member	Windsperger, Bekki	Best Buy Co., Inc.
Member	Yang, Shaopeng	GS1 China
Member	Yusdiar, Dani	GS1 Indonesia
Member	Zwanziger, Greg	SUPERVALU

9.1.2 Development Team Members

Function	Name	Organisation
GSMP Process Lead	David Buckley	GS1 Global Office
Technical Development Lead	Miklos Bolyky	GS1 Global Office
Peer Review	Mark Van Eeghem	GS1 Global Office